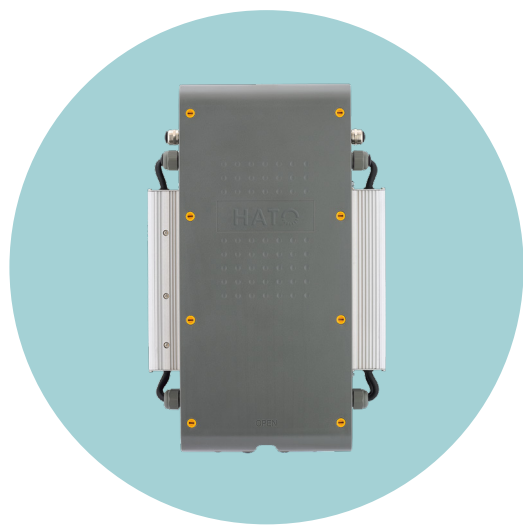


HATO POWER PACK

A high quality power supply box which can hold up to two dedicated LED power supplies. A bright and beautiful design specially made for poultry houses.



Specifications

Operating voltage:	100~240VAC 150~350VDC
AC frequency:	50~60Hz
Power factor:	>0.95 at full load
Input current typical:	3.5A/115VAC 1.65A/230VAC (per power supply)
Efficiency:	95% at full load
Inrush current typical:	COLD START 70A(t = 1010μ measured at 50% I) at 230VAC
Max power supplies on circuit breaker:	B16: 4 unit, C16: 6 units (use inrush current limiter for more units)
Leakage current each power supply:	<0.75mA
Output voltage:	24.0~48.5VDC (0-100%)
Output Current:	0~6.7A Max load fuse (V+): UL 75W / CE 288W
Dim voltage input:	1.0-10.0VDC (0-100%)
Dim input impedance:	100kΩ (per power supply)
Expected average lifetime:	60.000 hours
Operating temp.:	-10°C (14°F) < Ta < +45°C (113°F)
Nett weight:	6.5kgs
Material:	ABS
Warranty:	3 years
Application:	For 48VDC dimmable lamps

Dimensions

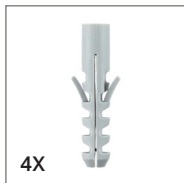
295 x 460 x 160 mm (width x length x height)

HATO POWER PACK

Accessories included



4pcs - M6 x 60mm
hex bolts



4pcs - Plugs for M6 x
60mm bolts



1pcs - Locking screw



2pcs - Roof supports

HATO POWER PACK 148D

Single power supply of 48VDC

HATO POWER PACK 248D

Two power supplies of 48VDC controlled together

HATO POWER PACK 248D-DDS

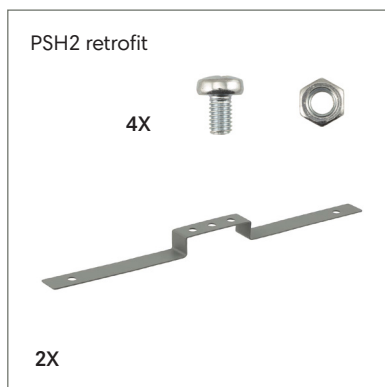
Two power supplies of 48VDC controlled
separately for tunable white lamps

Separate accessories



Roof

1X



PSH2 retrofit

4X

2X

Markings



IP65

#89551

Additional notes

HATO POWER PACK can be cleaned with high pressure cleaning when mounted on the wall.

Separate fuses are include for either CE or UL. To comply with UL, each output should be fused with 1.6 Amps.

UL: suitable for dry, damp and wet location